



US 20160293686A1

(19) **United States**(12) **Patent Application Publication**
Shin et al.(10) **Pub. No.: US 2016/0293686 A1**(43) **Pub. Date: Oct. 6, 2016**(54) **PIXEL AND DISPLAY DEVICE INCLUDING
THE SAME****Publication Classification**(71) Applicant: **Samsung Display Co., Ltd.,**
Yongin-City (KR)(72) Inventors: **Young Jun Shin**, Seongnam-si (KR);
Hee Kyung Kim, Busan (KR); **Dae Woo**
Lee, Hwaseong-si (KR); **Yun-Mo**
Chung, Yongin-si (KR)(51) **Int. Cl.****H01L 27/32** (2006.01)**H01L 51/52** (2006.01)**G09G 3/32** (2006.01)(52) **U.S. Cl.**CPC **H01L 27/3269** (2013.01); **G09G 3/3241**
(2013.01); **H01L 27/3232** (2013.01); **H01L**
51/5284 (2013.01); **G09G 2360/14** (2013.01);
G09G 2320/0626 (2013.01); **G09G 2320/0233**
(2013.01)(21) Appl. No.: **14/932,838**(22) Filed: **Nov. 4, 2015**(30) **Foreign Application Priority Data**

Mar. 31, 2015 (KR) 10-2015-0045415

(57)

ABSTRACT

A pixel and a display device including the same are disclosed. In one aspect, the pixel includes an organic light-emitting diode (OLED) and a reflection layer facing the OLED and configured to reflect light emitted from the OLED. The pixel also includes a photosensor configured to measure luminance of the reflected light. The photosensor is placed on a rear side of the OLED.

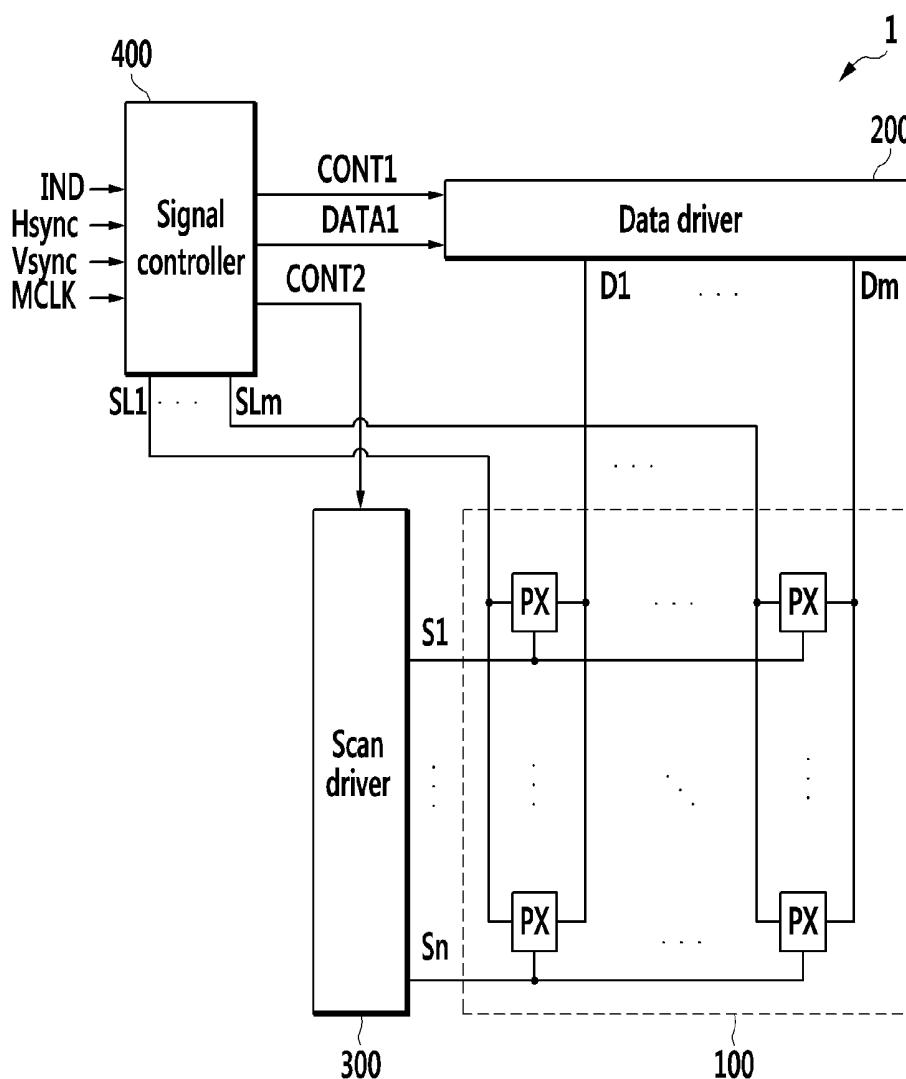


FIG. 1

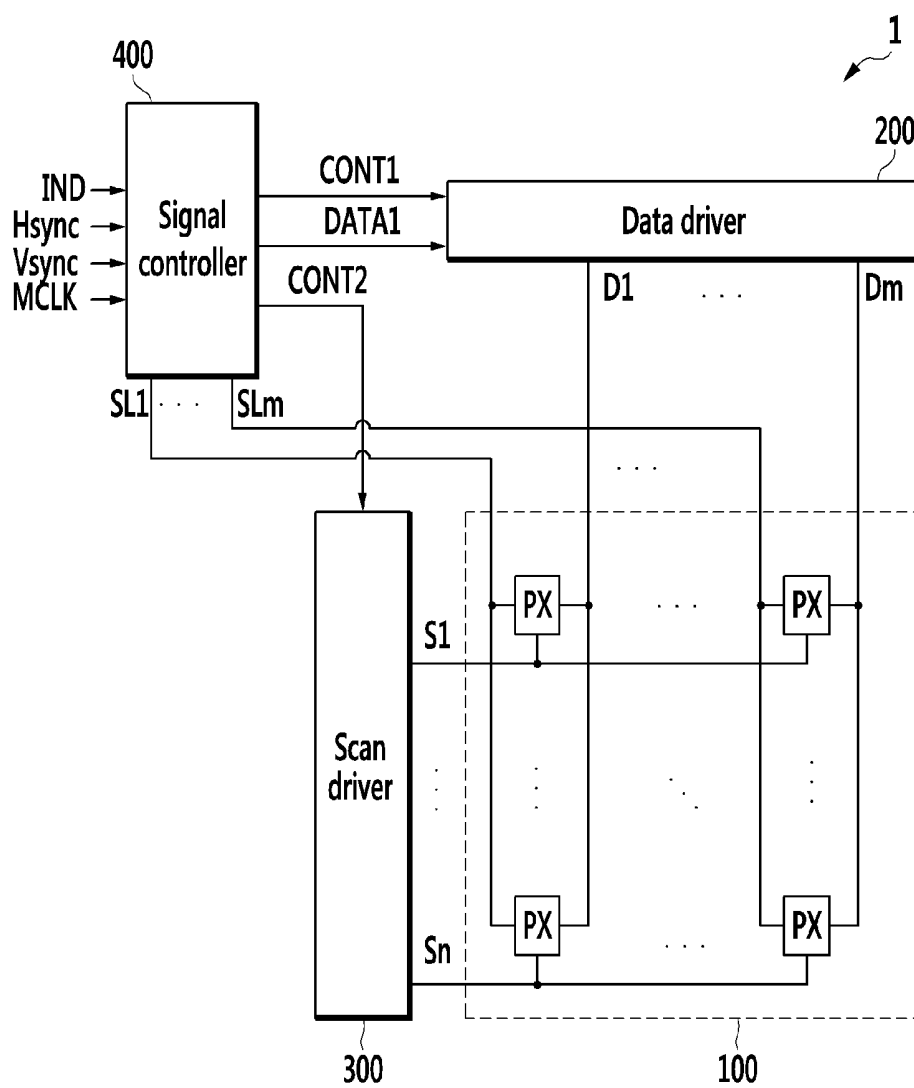


FIG. 2

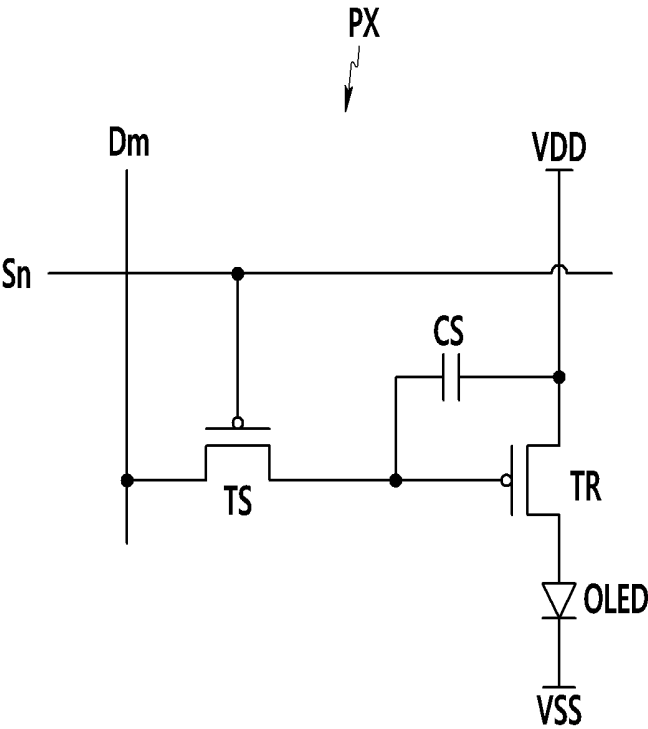
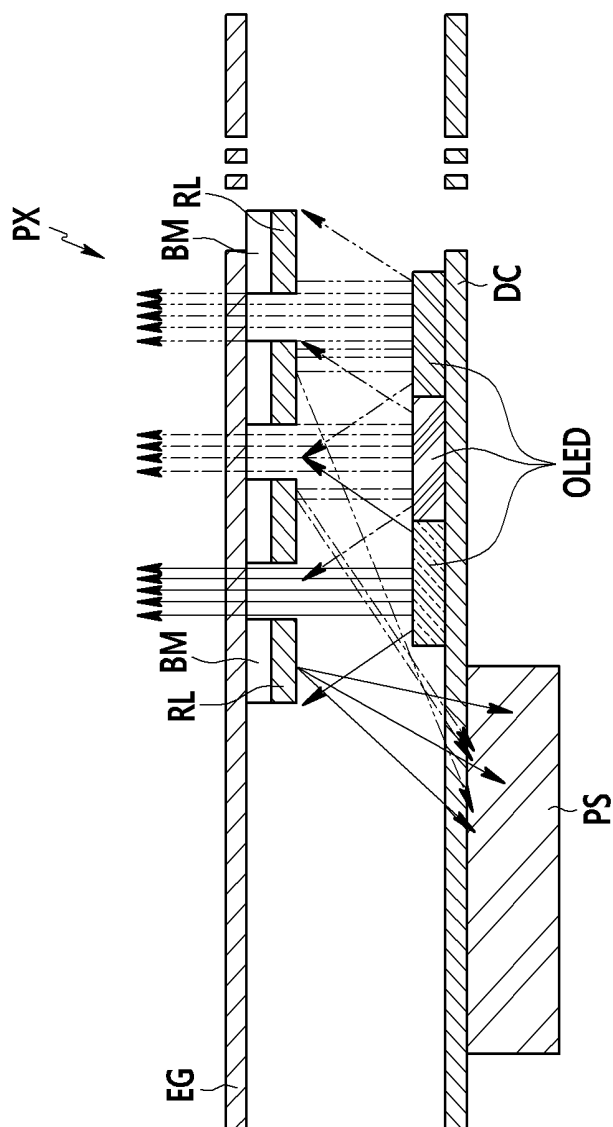


FIG. 3



PIXEL AND DISPLAY DEVICE INCLUDING THE SAME

CROSS-REFERENCE TO RELATED APPLICATION

[0001] This application claims priority to and the benefit of Korean Patent Application No. 10-2015-0045415 filed in the Korean Intellectual Property Office on Mar. 31, 2015, the entire contents of which are incorporated herein by reference.

BACKGROUND

[0002] 1. Field

[0003] The described technology generally relates to a pixel and a display device.

[0004] 2. Description of the Related Technology

[0005] Currently known display devices employ technologies that can be classified, for example, as a liquid crystal display (LCD), a plasma display panel (PDP), an organic light-emitting diode (OLED) device, a field effect display (FED), and an electrophoretic display device.

[0006] In particular, an OLED device includes two electrodes and an organic emission layer positioned therebetween, and an electron injected from one electrode and a hole injected from the other electrode are coupled with each other in the organic emission layer to generate an exciton, and the exciton emits energy to emit light.

[0007] Since this device is self-luminant (it does not require a separate light source unlike an LCD), its thickness and weight thereof can be reduced. Further, since it has many desirable characteristics such as a wide color gamut, low power consumption, high luminance, and high refresh rate, OLED has received attention as a next-generation technology.

[0008] In an OLED device, pixels degrade over time, and it is necessary to correct for reduced light output. To this end, a photosensor receives light emitted by the pixel, and the light is analyzed and corrected as needed.

[0009] However, when the light emitted by the pixel is not transmitted to the photosensor, the deteriorated pixel may not be corrected.

[0010] The above information disclosed in this Background section is only to enhance the understanding of the background of the described technology, and therefore it may contain information that does not constitute the prior art that is already known in this country to a person of ordinary skill in the art.

SUMMARY OF CERTAIN INVENTIVE ASPECTS

[0011] One inventive aspect relates to a display device for correcting the degradation of pixels.

[0012] Another aspect is a pixel and a display device for amplifying light output to a rear side of the pixel.

[0013] Another aspect is a pixel and a display device for efficiently correcting degradation of an OLED.

[0014] Another aspect is a pixel including: an OLED; a reflection layer formed to face the OLED and to reflect light of the OLED; and a photosensor for measuring luminance of the reflected light, wherein the photosensor is provided on a rear side of the OLED.

[0015] The photosensor does not overlap the OLED.

[0016] The reflection layer amplifies an amount of light output to a rear side of the OLED.

[0017] The pixel includes an encapsulation glass and a black matrix provided on a lower portion of the encapsulation glass, and the photosensor is formed on a lower portion of the black matrix.

[0018] Another aspect is a display device including a plurality of pixels, wherein the respective pixels include an OLED, a reflection layer formed to face the OLED and to reflect light of the OLED, and a photosensor for measuring luminance of the reflected light; and the photosensor is provided on a rear side of the OLED and the photosensor does not overlap the OLED.

[0019] The photosensor does not overlap the OLED.

[0020] The reflection layer amplifies an amount of light output to a rear side of the OLED.

[0021] The pixel includes an encapsulation glass and a black matrix provided on a lower portion of the encapsulation glass, and the photosensor is formed on a lower portion of the black matrix.

[0022] The display device further includes: a data driver for generating a plurality of data signals according to a control signal; and a signal controller for generating the control signal, wherein the OLED emits light according to a driving current corresponding to the data signal, and the signal controller determines degradation of the OLED based upon a luminance value of the reflected light, and generates the control signal to correct an amount of light of the degraded OLED.

[0023] The pixel and the display device according to the exemplary embodiment have the effect of amplifying the light output to the rear side of the pixel.

[0024] The pixel and the display device according to the exemplary embodiment also have the effect of efficiently correcting degradation of the OLED.

[0025] Another aspect is a pixel comprising: an organic light-emitting diode (OLED); a reflection layer facing the OLED and configured to reflect light emitted from the OLED; and a photosensor configured to measure luminance of the reflected light, wherein the photosensor is placed on a rear side of the OLED.

[0026] In the above pixel, the photosensor does not overlap the OLED in the depth dimension of the pixel. In the above pixel, the reflection layer is configured to amplify an amount of light output to the rear side of the OLED. The above pixel further comprises an encapsulation glass and a black matrix placed on a lower portion of the encapsulation glass, wherein the photosensor is placed on a lower portion of the black matrix. In the above pixel, the photosensor partially overlaps the black matrix in the depth dimension of the pixel. In the above pixel, the photosensor is thicker than the black matrix. In the above pixel, the photosensor is thicker than the reflection layer. In the above pixel, the photosensor is thicker than the OLED. The above pixel further comprises a driving circuit layer formed below the OLED and formed over the photosensor. In the above pixel, the photosensor is configured to sense light emitted from the OLED and passing through the driving circuit layer. In the above pixel, the photosensor is thicker than the driving circuit layer.

[0027] Another aspect is a display device, comprising: a plurality of pixels, wherein each of the pixels includes: an organic light-emitting diode (OLED); a reflection layer facing the OLED and configured to reflect light emitted from the OLED; and a photo sensor configured to measure luminance of the reflected light, wherein the photosensor is placed on a rear side of the OLED.

[0028] In the above display device, the photosensor does not overlap the OLED in the depth dimension of the display device. In the above display device, the reflection layer is configured to amplify an amount of light output to the rear side of the OLED. In the above display device, the pixel includes a glass encapsulation glass and a black matrix placed on a lower portion of the glass encapsulation, and wherein the photosensor is placed on a lower portion of the black matrix. The above display device further comprises: a data driver configured to generate a plurality of data signals according to a control signal; and a signal controller configured to generate the control signal, wherein the OLED is configured to emit light according to a driving current corresponding to the data signals, and wherein the signal controller is further configured to determine degradation of the OLED based upon a luminance value of the reflected light, and generate the control signal to correct an amount of light of the degraded OLED. In the above display device, the photosensor partially overlaps the black matrix in the depth dimension of the pixel. The above display device further comprises a driving circuit layer formed below the OLED and formed over the photosensor, wherein the photosensor is configured to sense light emitted from the OLED and passing through the driving circuit layer.

[0029] Another aspect is a pixel comprising: a driving circuit layer including first and second surfaces opposing each other; an organic light-emitting diode (OLED) formed on the first surface of the driving circuit layer; a reflection layer formed over the OLED and configured to reflect light emitted from the OLED; and a photo sensor placed on the second surface of the driving circuit layer and configured to measure luminance of the reflected light, wherein the photo sensor and the OLED do not overlap each other in the depth dimension of the pixel.

[0030] The above pixel further comprises a black matrix formed over the reflection layer, wherein the black matrix and the reflection layer have substantially the same width.

BRIEF DESCRIPTION OF THE DRAWINGS

[0031] FIG. 1 shows a display device according to an exemplary embodiment.

[0032] FIG. 2 shows a pixel of FIG. 1.

[0033] FIG. 3 shows a cross-sectional diagram of a pixel according to an exemplary embodiment.

DETAILED DESCRIPTION OF CERTAIN INVENTIVE EMBODIMENTS

[0034] Hereinafter, exemplary embodiments disclosed in the present specification will be described in detail with reference to the accompanying drawings. In the present specification, the same or similar components will be denoted by the same or similar reference numerals, and duplicate descriptions thereof will be omitted. The terms “module” and “unit” for components used in the following description are used only ease of description. Therefore, these terms do not have meanings or roles in and of themselves that would distinguish them from each other. In describing exemplary embodiments of the present specification, when it is determined that a detailed description of the well-known art associated with the present invention may obscure the gist of the present invention, such description will be omitted. The accompanying drawings are provided only in order to allow exemplary embodiments disclosed in the present specification to be eas-

ily understood and are not to be interpreted as limiting the spirit disclosed in the present specification, and it is to be understood that the present invention includes all modifications, equivalents, and substitutions without departing from the scope and spirit of the present invention.

[0035] Terms including ordinal numbers such as first, second, and the like, will be used only to describe various components, and are not interpreted as limiting these components. The terms are only used to differentiate one component from other components.

[0036] It is to be understood that when one component is referred to as being “connected” or “coupled” to another component, it may be connected or coupled directly to another component or there may be other intervening components. On the other hand, it is to be understood that when one component is referred to as being “connected or coupled directly” to another component, there are no other intervening components.

[0037] Singular forms are to include plural forms unless the context clearly indicates otherwise.

[0038] It will be further understood that terms “comprises” or “have” used in the present specification specify the presence of stated features, numerals, steps, operations, components, parts, or a combination thereof, but do not preclude the presence or addition of one or more other features, numerals, steps, operations, components, parts, or a combination thereof.

[0039] In the drawings, the thickness of layers, films, panels, regions, etc., are exaggerated for clarity. Like reference numerals designate like elements throughout the specification. It will be understood that when an element such as a layer, film, region, or substrate is referred to as being “on” another element, it can be directly on the other element or intervening elements may also be present. In contrast, when an element is referred to as being “directly on” another element, there are no intervening elements present. In this disclosure, the term “substantially” includes the meanings of completely, almost completely or to any significant degree under some applications and in accordance with those skilled in the art. The term “connected” includes an electrical connection.

[0040] FIG. 1 is a block diagram of a display device 1 according to an exemplary embodiment. Depending on embodiments, certain elements may be removed from or additional elements may be added to the display device 1 illustrated in FIG. 1. Furthermore, two or more elements may be combined into a single element, or a single element may be realized as multiple elements. This applies to the remaining apparatus embodiments.

[0041] Referring to FIG. 1, the display device 1 includes a plurality of scanning lines (S1-Sn), a plurality of data lines (D1-Dm), a display unit 100, a data driver 200, a scan driver 300, a signal controller 400, and a plurality of pixels PX.

[0042] As shown in FIG. 1, the scanning lines (S1-Sn) (n is a natural number) are arranged in a vertical or column direction and each of the scanning lines (S1-Sn) extends in a horizontal or row direction. The data lines (D1-Dm) (m is a natural number) are arranged in a horizontal or row direction and each of the data lines (D1-Dm) extends in a vertical or column direction.

[0043] The display unit 100 is connected to the scanning lines (S1-Sn), the data lines (D1-Dm), and the sensing lines (SL1-SLm). The pixels PX are substantially arranged in a matrix form.

[0044] The data driver **200** is connected to a plurality of data lines (D1-Dm). The data driver **200** generates a plurality of data signals (D[1]-D[m]) (e.g., a data voltage) corresponding to image data DATA1 input according to a data driving control signal CONT1 and applies the same to a plurality of data lines (D1-Dm).

[0045] The scan driver **300** is connected to a plurality of scanning lines (S1-Sn), and it sequentially applies a plurality of scanning signals (S[1]-S[n]) to a plurality of scanning lines (S1-Sn) according to a scan control signal CONT2.

[0046] The signal controller **400** receives external input data InD and a synchronization signal and generates a data driving control signal CONT1, a scan control signal CONT2, and image data DATA1. The external input data InD include luminance information of the pixels PX, and the luminance has a predetermined number of grays (e.g., $1024(=2^{10})$, $256(=2^8)$, or $64(=2^6)$). The synchronization signal includes a horizontal synchronizing signal Hsync, a vertical synchronization signal Vsync, and a main clock signal MCLK. The signal controller **400** distinguishes the external input data InD for respective frames according to the vertical synchronization signal Vsync. The signal controller **400** distinguishes the external input data InD for respective scan lines according to the horizontal synchronizing signal Hsync and generates the image data DATA1.

[0047] The signal controller **400** is connected to a plurality of sensing lines (SL1-SLm), and determines the degradation of the pixels PX based upon measured luminance values of the pixels PX. The signal controller **400** may generate the data driving control signal CONT1 to correct an amount of light of the degraded pixel PX.

[0048] The pixels PX respectively display an image, and more specifically, one pixel may uniquely display one primary color (spatial division), or the pixels may alternately display primary colors over time (temporal division) so that a spatial sum or a temporal sum of the primary colors may be displayed as a desired color. The pixels PX are synchronized with corresponding scanning signals and receive data signals (D[1]-D[m]) from the corresponding data lines. The data signals (D[1]-D[m]) input to the pixels PX are programmed to the pixels PX according to the scanning signals supplied through the corresponding scanning lines.

[0049] Each of the pixels PX includes an OLED (OLED, refer to FIG. 3) and a photosensor (PS, refer to FIG. 3). A plurality of photosensors (PS) are connected to a plurality of corresponding sensing lines (SL1-SLm). The photosensors (PS) are respectively synchronized with corresponding scanning signals and measure a luminance value of light emitted by the corresponding OLED. The configuration of the pixel PX will now be described in detail.

[0050] FIG. 2 shows the pixel PX of FIG. 1. As shown in FIG. 2, the pixel PX includes a switching transistor (TS), a driving transistor (TR), a storage capacitor (CS), and an OLED.

[0051] The switching transistor (TS) includes a gate electrode connected to the scanning line (Sn), a first electrode connected to the data line D1, and a second electrode connected to a gate electrode of the driving transistor (TR).

[0052] The driving transistor (TR) includes a gate electrode connected to the second electrode of the switching transistor (TS), a source electrode connected to a driving voltage (VDD), and a drain electrode connected to an anode of the OLED.

[0053] The storage capacitor (CS) is connected between the gate electrode and the source electrode of the driving transistor (TR).

[0054] The OLED includes a cathode connected to a driving voltage (VSS).

[0055] When the switching transistor (TS) is turned on by the scanning signal with a gate-on voltage transmitted through the scanning line S1, the data signal is transmitted to the gate electrode of the driving transistor (TR) through the switching transistor (TS). A voltage caused by the data signal transmitted to the gate electrode of the driving transistor (TR) is maintained by the storage capacitor (CS).

[0056] A driving current corresponding to the voltage maintained by the storage capacitor (CS) flows to the driving transistor (TR). The driving current flows to the OLED, and the OLED emits light with a luminance corresponding to the driving current.

[0057] FIG. 3 shows a cross-sectional diagram of a pixel according to an exemplary embodiment. FIG. 3 shows the display unit **100** according to an exemplary embodiment with a configuration of a front emissive display device.

[0058] For ease of description, FIG. 3 shows that one photosensor (PS) is formed corresponding to one OLED, but the exemplary embodiment is not limited thereto, and one photosensor (PS) may be formed corresponding to a plurality of OLEDs.

[0059] The respective pixels PX include an encapsulation glass (EG) or a glass encapsulation, and a driving circuit layer (DC) formed to face the encapsulation glass (EG). A black matrix (BM) is provided on a lower portion of the encapsulation glass (EG), and a reflection layer (RL) is provided on the black matrix (BM). The OLED is provided on the driving circuit layer (DC), and the photosensor (PS) is formed in a position that does not overlap the OLED on a lower portion of the driving circuit layer (DC).

[0060] The driving circuit layer (DC) includes a pixel circuit (refer to FIG. 2) for generating a driving current corresponding to the data signal input to the pixels PX and a plurality of electrodes (not shown) for transmitting the generated driving current to the OLED.

[0061] The OLED emits light with a luminance corresponding to the driving current. The light emitted by the OLED may be output to the front side through the encapsulation glass (EG). The light emitted by the OLED is reflected on the reflection layer (RL) and reaches the photosensor (PS), and the reflection layer (RL) may increase the amount of light output to the rear side.

[0062] The black matrix (BM) blocks undesired light when the image is realized by using the light (e.g., red, green and blue light) emitted by the OLED. The photosensor (PS) senses the luminance of light emitted by the OLED.

[0063] While the inventive technology has been described in connection with what is presently considered to be practical exemplary embodiments, it is to be understood that the invention is not limited to the disclosed embodiments, but, on the contrary, is intended to cover various modifications and equivalent arrangements included within the spirit and scope of the appended claims. Therefore, the above detailed description is not to be interpreted as being restrictive, but is to be considered as being illustrative. The scope of the present invention is to be determined by reasonable interpretation of the claims, and all alterations within equivalences of the present invention fall within the scope of the present invention.

What is claimed is:

1. A pixel comprising:
 - an organic light-emitting diode (OLED);
 - a reflection layer facing the OLED and configured to reflect light emitted from the OLED; and
 - a photosensor configured to measure luminance of the reflected light,
 wherein the photosensor is placed on a rear side of the OLED.
2. The pixel of claim 1, wherein the photosensor does not overlap the OLED in the depth dimension of the pixel.
3. The pixel of claim 2, wherein the reflection layer is configured to amplify an amount of light output to the rear side of the OLED.
4. The pixel of claim 3, further comprising an encapsulation glass and a black matrix placed on a lower portion of the encapsulation glass, wherein the photosensor is placed on a lower portion of the black matrix.
5. The pixel of claim 4, wherein the photosensor partially overlaps the black matrix in the depth dimension of the pixel.
6. The pixel of claim 4, wherein the photosensor is thicker than the black matrix. The pixel of claim 1, wherein the photosensor is thicker than the reflection layer.
8. The pixel of claim 1, wherein the photosensor is thicker than the OLED.
9. The pixel of claim 1, further comprising a driving circuit layer formed below the OLED and formed over the photosensor.
10. The pixel of claim 9, wherein the photosensor is configured to sense light emitted from the OLED and passing through the driving circuit layer.
11. The pixel of claim 9, wherein the photosensor is thicker than the driving circuit layer.
12. A display device, comprising:
 - a plurality of pixels, wherein each of the pixels includes:
 - an organic light-emitting diode (OLED);
 - a reflection layer facing the OLED and configured to reflect light emitted from the OLED; and
 - a photosensor configured to measure luminance of the reflected light,
 wherein the photosensor is placed on a rear side of the OLED.
13. The display device of claim 12, wherein the photosensor does not overlap the OLED in the depth dimension of the display device.
14. The display device of claim 13, wherein the reflection layer is configured to amplify an amount of light output to the rear side of the OLED.
15. The display device of claim 14, wherein the pixel includes a glass encapsulation glass and a black matrix placed on a lower portion of the glass encapsulation, and wherein the photosensor is placed on a lower portion of the black matrix.
16. The display device of claim 15, further comprising:
 - a data driver configured to generate a plurality of data signals according to a control signal; and
 - a signal controller configured to generate the control signal,
 wherein the OLED is configured to emit light according to a driving current corresponding to the data signals, and wherein the signal controller is further configured to determine degradation of the OLED based upon a luminance value of the reflected light, and generate the control signal to correct an amount of light of the degraded OLED.
17. The display device of claim 12, wherein the photosensor partially overlaps the black matrix in the depth dimension of the pixel.
18. The display device of claim 12, further comprising a driving circuit layer formed below the OLED and formed over the photosensor, wherein the photosensor is configured to sense light emitted from the OLED and passing through the driving circuit layer.
19. A pixel comprising:
 - a driving circuit layer including first and second surfaces opposing each other;
 - an organic light-emitting diode (OLED) formed on the first surface of the driving circuit layer;
 - a reflection layer formed over the OLED and configured to reflect light emitted from the OLED; and
 - a photo sensor placed on the second surface of the driving circuit layer and configured to measure luminance of the reflected light, wherein the photo sensor and the OLED do not overlap each other in the depth dimension of the pixel.
20. The pixel of claim 19, further comprising a black matrix formed over the reflection layer, wherein the black matrix and the reflection layer have substantially the same width.

* * * * *

专利名称(译)	像素和包括其的显示设备		
公开(公告)号	US20160293686A1	公开(公告)日	2016-10-06
申请号	US14/932838	申请日	2015-11-04
[标]申请(专利权)人(译)	三星显示有限公司		
申请(专利权)人(译)	三星DISPLAY CO. , LTD.		
当前申请(专利权)人(译)	三星DISPLAY CO. , LTD.		
[标]发明人	SHIN YOUNG JUN KIM HEE KYUNG LEE DAE WOO CHUNG YUN MO		
发明人	SHIN, YOUNG JUN KIM, HEE KYUNG LEE, DAE WOO CHUNG, YUN-MO		
IPC分类号	H01L27/32 H01L51/52 G09G3/32		
CPC分类号	H01L27/3269 G09G3/3241 H01L27/3232 G09G2320/0233 G09G2360/14 G09G2320/0626 H01L51/5284 G09G3/3233 G09G2360/148 H01L27/3227 H01L51/5271		
优先权	1020150045415 2015-03-31 KR		
外部链接	Espacenet USPTO		

摘要(译)

公开了一种像素和包括该像素的显示装置。在一个方面，像素包括有机发光二极管（OLED）和面向OLED并且被配置为反射从OLED发射的光的反射层。像素还包括配置成测量反射光的亮度的光电传感器。光电传感器放置在OLED的后侧。

